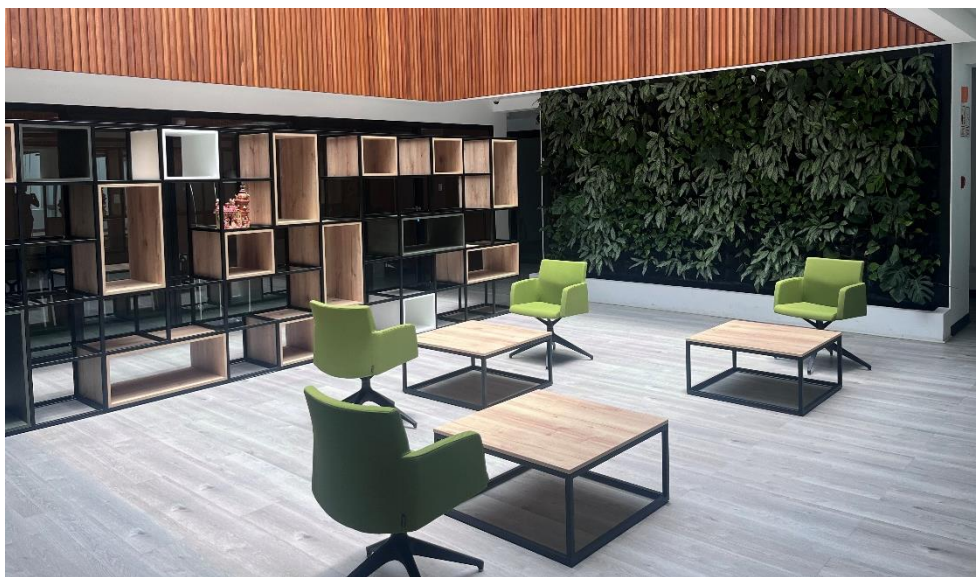


UNFPA GREENHOUSE GAS (GHG) INVENTORY MANAGEMENT PLAN 2023



Peru CO, Lima

This document is produced thanks to the collective input of UNFPA personnel, especially of green focal points for GHG reporting. Document's authors: Oliver Buehler & Mel Amancio, UNFPA Environmental Sustainability Team.

Version 1, copyright © 2024

Contents

1	Introduction	3
2	IMP 2023	3
2.1	Version information	3
2.2	Contact information	3
2.3	Boundary conditions	3
2.3.1	Organizational Boundary	3
2.3.2	List of GHG’s Being Accounted for under the UN GHG Inventory	4
2.3.3	List of Organization-Wide Facilities Included in this Inventory	4
2.3.4	List of Offices Not Included in This Inventory	4
2.3.5	Emissions Categories and Sources	4
2.3.6	UNFPA Boundary Condition Assumptions	5
2.4	Emissions quantification	7
2.4.1	Quantification method	7
2.4.2	Proxies used	7
2.4.3	Source of Activity Data	7
2.4.4	Normalization Factors	8
2.4.5	Data Collection Process for Normalization Factor	8
2.4.6	Data Collection Process – Quality Assurance	8
2.4.7	Frequency	9
2.5	Base Year	9
2.5.1	Base Year Recalculation Policy	9
2.5.2	Adjustment – Structural Changes	9
2.5.3	Adjustment – Methodology Changes	9
2.6	Management Tools	9
2.6.1	Roles and Responsibilities	9
2.6.2	Training	10
2.7	Auditing and Verification	10
2.7.1	Internal Auditing	10
2.7.2	External Validation and/or Verification	10
2.7.3	Management Review	10
3	Annex 1: Overview of the Results of the UNFPA GHG Inventory 2023	11
4	Annex 2: List of premises included in the scope of the GHG inventory	12

1 INTRODUCTION

This Greenhouse Gas Emissions Inventory Management Plan (IMP) provides a detailed foundation for the UNFPA comprehensive effort to measure and manage greenhouse gas (GHG) emissions from its internal global operations. This document provides organization-wide information, including corporate overview and goals, boundary conditions of the inventory, emissions quantification methods, data management methods, base year, list of management tools, and verification processes.

The UNFPA GHG Inventory 2023 was calculated using a tailored online calculation tool provided by Impact Solutions. Emissions categories and sources are, therefore, more realistic with the context on the field. A summary of the results of the GHG Inventory 2023 are available in Annex 1: Overview of the Results of the UNFPA GHG Inventory 2023.

The UN GHG Inventory follows a common minimum boundary and GHG accounting principles mostly prescribed by the World Resources Institute (WRI) and the World Business Council for Sustainable Development’s (WBCSD) Greenhouse Gas Protocol Initiative (GHG Protocol), but at the same time allows participating UN entities flexibility within these limits.

2 IMP 2023

2.1 Version information

Item	Description	
A	Reporting Period	2023
B	Version Number of IMP	v1
C	Corresponding inventory version number	v1
D	Date IMP Completed	23 July 2024

2.2 Contact information

Item	Description	
1	Inventory Contact:	Mel Amancio
2	Inventory Contact Information:	amancio@unfpa.org

2.3 Boundary conditions

2.3.1 Organizational Boundary

UN entities differ in their structures and operations. According to the guidelines of the GHG Protocol for corporate GHG Inventory reporting, a company’s organizational boundaries can either be defined by the amount of equity a company has in an operation (**Equity Approach**) or based on a company’s operational

control over a location or facility (**Control Approach**). The GHG Protocol also requires that a company select the type of organizational boundary according to which method most accurately reflects the day-to-day practices of the business.

Control can be defined in either financial or operational terms.

- *Financial Control*: An entity has financial control over the operation if the former can direct the financial and operating policies of the latter with a view to gaining economic benefits from its activities.
- *Operational Control*: An entity has operational control over an operation if the former or one of its subsidiaries has the full authority to introduce and implement its operating policies at the operation.

The UNFPA applies the principle of operational control to define the boundaries of its GHG inventory.

Consistent with this approach the UNFPA accounts for GHG emissions from its locations for which it has direct control over operations, and where it can influence decisions that impact GHG emissions. This includes all owned and leased facilities/vehicles operated by UNFPA. UNFPA adheres to the UN wide boundary for emission reporting.

2.3.2 List of GHG's Being Accounted for under the UN GHG Inventory

See [UN-wide IMP 2023-2024](#).

2.3.3 List of Organization-Wide Facilities Included in this Inventory

The list of facilities falling within the reporting boundary has been obtained from UNFPAs Country Office Real Estate Management System (COREM) as well as the UNFPA's Global Directory of personnel. The UNFPA GHG Inventory 2023 includes secondary/project offices in addition to the main offices in each country, similarly the previous years. The complete list of entities can be found in the Annex 2: List of premises included in the scope of the GHG inventory.

2.3.4 List of Offices Not Included in This Inventory

The UNFPA includes all its main and sub-offices in its reporting boundary.

2.3.5 Emissions Categories and Sources

The list of most commonly track categories are pre-selected in the tool:

Mandatory scope 1 and 2 emissions

Vehicle Use

- Combustion engine vehicles
- Electric vehicles

Facility Fuel Use

- Fossil fuel use (e.g., generators or boilers)
- Renewable energy (on-site production)
- Refrigerant Leakage

Purchased Energy

- Electricity from the grid
- Steam & heated/cooled water (Heating)

Optional emissions (Scope 3)

Business Travel

- Air travel
- Ground travel (train, taxis, rented vehicles)

Focal Points are also to report on “Waste by Type” and “Water Usage” using the Impacti CARBON tool, though the equivalent emissions are not yet calculated.

2.3.6 UNFPA Boundary Condition Assumptions

The inventory data collection methodology is, to the extent possible, the same throughout all offices. Our boundary conditions and assumptions are outlined below:

Buildings

- Where UNFPA shares office facilities without a separate meter, emissions are apportioned by percentage of total square meters occupied by the organization. A spreadsheet was shared with Green Focal Points to facilitate the calculation of estimated data.
- Estimates on number of personnel are derived from HR records.
- All offices are required to report on electricity, refrigerants, steam, and generator fuel consumption (when applicable).
- Where reliable electricity figures are missing, one of the following methods is used, in order of preference: 1) Previous year data (if not a proxy), 2) Proxy based on regional average of kWh per m².
- Where refrigerant figures are missing, a proxy based on kg of refrigerant per m² is used.
- Where steam figures or generator fuel figures are missing a data gap is marked.

Air travel

Air travel is representative of the UNFPA’s core business activities and a significant emissions source. All offices are required to fill in Air Travel data through the ICAO Air Travel GHG calculator version 5.0.8, which is measured in tons of CO₂ and total km traveled.

The Green Focal Points obtain information on air travel either by contacting their travel agency or by collecting data from the associate responsible for travel at their office. Then, they transfer the data to ICAO air travel calculator spreadsheet. UNFPA HQ asks all the offices to submit their ICAO air calculator

spreadsheet report for the reference. All flights purchased by the UNFPA are to be included in the inventory.

Where IATA codes are faulty and/or incomplete, they are corrected by UNFPA HQ on the base of likelihood/approximations or further clarification from the Focal Points.

Emissions from offices using the services of UNHAS (United Nations Humanitarian Air Service) are provided by this Service and added to the calculated emissions.

Non-Air Business Travel

To account for transportation to/from airports, the GHG Helpdesk recommends applying a proxy of 25km per terminal recorded under “taxi” (also in those locations where taxi services are not used). Having said that, in many UNFPA locations, transport to/from airports is provided by an office vehicle and therefore already accounted for in the vehicle emissions.

Mobile sources

All the mobile sources data is entered either by fuel used or by distance traveled. When fuel consumption or mileage for mobile sources is not available, a proxy value for fuel consumption based on average fuel price from invoices is used (when the information is available).

Water consumption

Offices are encouraged to report water consumption through accessing water bills and/or meters. In case the office is in a shared/common premise, the dedicated spreadsheet can help estimate the data for the UNFPA office. Moreover, the wastewater treatment type is also to be reported. For this year, a proxy per staff was manually entered by HQ for all offices where the information was missing, based on the actual data provided by field offices. Water source and wastewater treatment type were identified as “Unknown”.

Waste management

Offices are encouraged to report on general, recyclable, electronic and hazardous waste production by contacting the waste management company in charge of their office or by estimating the waste based on the number of containers disposed of by year. For this year, a proxy per staff was manually entered by HQ for all offices where the information was missing, based on the actual data provided by field offices, for “General waste” only. Waste treatment type was identified as “Unknown”.

This exercise was also important to understand if e-waste and hazardous waste are produced by the office and, in this case, how they are discarded and treated. E-waste includes items like monitors, laptops, desktops, and mobile phones. Country offices are asked to report how many items they disposed of in 2023 and then indicate whether the item had been donated, discarded, or recycled.

2.4 Emissions quantification

2.4.1 Quantification method

See [UN-wide IMP 2023-2024](#).

Note on quantification of Scope 3 emissions - duty travel emissions (air travel):

- Business air travel is a significant component of the UNFPA emission profile. In the UN GHG inventory, emissions from air travel are calculated using the ICAO air travel calculator (v 5.0.8).

2.4.2 Proxies used

Emission source	Option #	Proxy	Opportunity for improvement
Fuel consumption	1	Based on the cost of liters of Diesel/Petrol per country on the day of the reporting	Keep track of volume purchased in the invoices
	2	Based on 2022 data	Impose logbooks for mileage of the fleet
Electricity purchased	1	Based on the cost of kWh per country on the day of the reporting	Keep track of volume purchased in the invoices
	2	Based on 2022 data	Install electricity meters
	3	Based on median of kWh/m ² from 2023 in the offices from the same region	
Air travel	1	Based on 2022 data	Impose dedicated Travel officer and monitoring system
Water	1	6.2m ³ /staff (based on median per staff of offices providing data)	Install water meters
General waste	1	21.2kg/staff (based on median per staff of offices providing data)	Propose Country/Regional proxies

2.4.3 Source of Activity Data

Vehicle Sources

- Fuel consumption/mileage for office car: activity data typically comes from fuel purchase receipts and/or logbook records. Where fuel purchase data is not available, typically driver log information on fuel purchases or mileage is used.

Generators

- Fuel for generators: this information is usually collected from purchasing records maintained by facility managers of buildings and/or contacting building management or the vendor directly. Mainly these are back-up generators.

Electricity

- Emissions from electricity usage typically come from landlords for leased buildings and from monthly electric utility bills for owned buildings.

Steam

- Purchased steam or heat from an individual Combined Heat and Power plant (CHP) can be acquired by consulting the purchasing records (amount of steam/heat purchased) and/or contacting the building management.

Travel

- Air Travel data was collected the following way. First, Field Office Focal Point obtained annual travel data through their local travel management contractor. Then, the itineraries with expressed IATA codes and class of travel were transferred for processing into the ICAO calculator. Afterwards, the final number was entered to GHG emission calculation report under Air Travel category. A copy of each country’s travel ICAO report was saved for internal records and verification purposes.
- Land-based travel including taxis is calculated by distance travelled and the latest UN emission factors.

2.4.4 Normalization Factors

See [UN-wide IMP 2023-2024](#).

2.4.5 Data Collection Process for Normalization Factor

Office square meters and number of personnel can be corrected by individual offices via the Impacti CARBON tool.

2.4.6 Data Collection Process – Quality Assurance

Uncertainty is widespread in all data sources, as office reports are not accompanied by any supporting evidence but rely fully on the accuracy of reporting personnel. Nevertheless, we ask Green Focal Points to indicated if the data was “measured”, “estimated”, or if they need a “proxy”.

To provide a level of quality assurance with the country office activity data, all office entries are reviewed in detail and clarifying questions are sent to key contacts. When clarifying information is not received, data is taken out of the inventory if it has a large potential for error and will skew inventory results. In these cases, a proxy is proposed.

To detect obvious errors, year on year comparison of the reported emission levels is performed. This type of quality check is possible for offices that are at least in their second year of reporting. Also, extremely

high/low values are also flagged. The Impacti CARBON team also supported the quality check verifying common mistakes from data entry.

2.4.7 Frequency

Facility data will be reported on an annual basis in time for annual inventory reporting, generally by the end of the first quarter of the year.

2.5 Base Year

Following the new Strategy for sustainability management in the United Nations, 2020-2030, the base year is now 2010.

2.5.1 Base Year Recalculation Policy

At present, a Base Year Recalculation Policy specific to UNFPA does not exist. UNFPA will follow the UN-wide recalculation policy when this is made available, or until its internal recalculation policy is developed.

2.5.2 Adjustment – Structural Changes

Structural changes include mergers, acquisitions, and divestments and/or outsourcing or insourcing of GHG emitting activities. Changes in the status of leased assets also are considered structural changes. Since 2010, UNFPA real estate has evolved and since 2018 sub-offices are also included in the scope of the GHG inventory.

2.5.3 Adjustment – Methodology Changes

Methodology changes include changes in activity data accuracy, changes in emission factors, changes in electricity intensity or air travel intensity figures, and/or changes to the methodology used to calculate GHG emissions. UNFPA follows the UN wide guidance in this area.

2.6 Management Tools

2.6.1 Roles and Responsibilities

GHG Focal Points in each of the field offices (Office Users) provided office information into the Impacti CARBON tool and saved the ICAO calculator in a dedicated folder. This information is then compiled by the Environmental Efficiency Specialist at the UNFPA HQ office (Entity Administrator).

2.6.2 Training

The UNFPA understands that most Green Focal Points perform different professional functions and are not familiar with issues of climate neutrality or environmental sustainability. Six online training sessions were delivered in four languages to help focal points 1) correctly use the ICAO calculator and report on air travel data in the new tool, 2) better understand which data to collect, and 3) how to enter data in the online application.

2.7 Auditing and Verification

2.7.1 Internal Auditing

Internal procedures used to verify accuracy of GHG inventory. UNFPA has a data quality review in place for all data submitted by Country Offices, to ensure that results are realistic.

2.7.2 External Validation and/or Verification

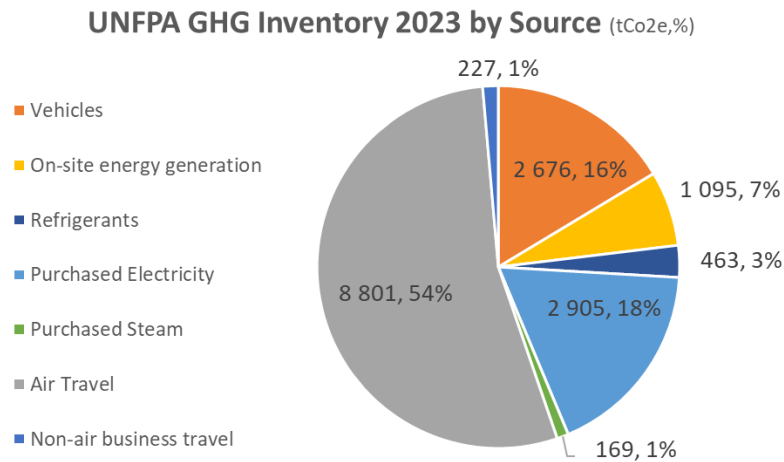
At this stage there are no External procedures (i.e., 3rd party verifiers) used to verify accuracy of GHG inventory.

2.7.3 Management Review

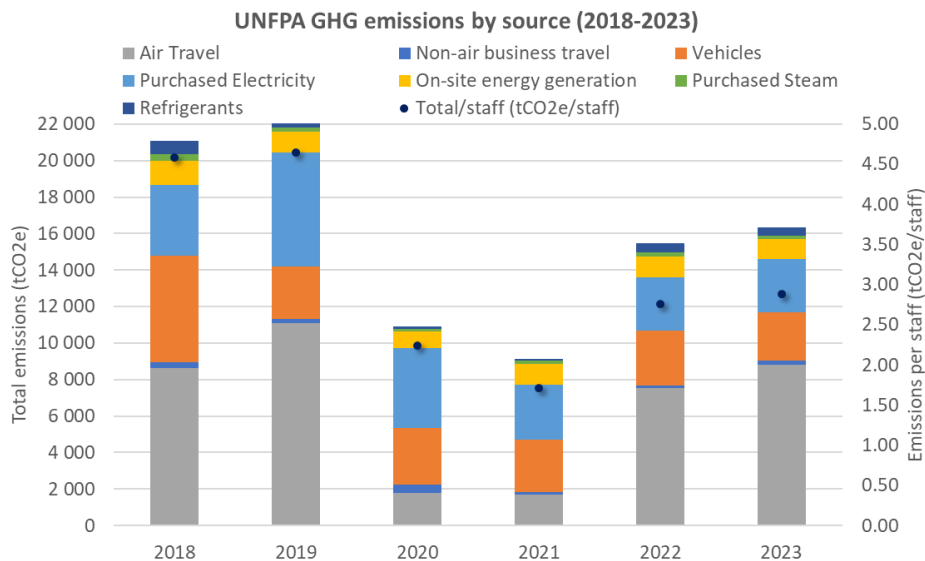
At present, there is no management review process for the GHG inventory.

3 ANNEX 1: OVERVIEW OF THE RESULTS OF THE UNFPA GHG INVENTORY 2023

The share of emissions from Air travel increased again since the return to regular international air travel and it is now at 54% of all emissions from operations. It is followed by emissions from purchased electricity and vehicles, corresponding to 18% and 16% of the total, respectively. Fuel for generators is underestimated due to lack of reliable data. This is an issue when Field offices request funds to HQ for solar projects, as they do not have a robust business case. Nevertheless, overall emissions are still lower than pre-pandemic levels, with a total of 16,336 tCO₂e in 2022.



The graph below shows that, overall, we have reduced emissions from operations by 23% since 2018, mainly thanks to reductions from Facilities (-26%) and Vehicles (-54%). Nevertheless, emissions from air travel are back at pre-pandemic levels, as we observe a slight increase in total emissions compared to 2022 (+6%).



4 ANNEX 2: LIST OF PREMISES INCLUDED IN THE SCOPE OF THE GHG INVENTORY

Entity	No. of Workers	Office Space (m2)
Afghanistan_Bamyan City_Sub-Office	3	22
Afghanistan_Herat City_Sub-Office	9	570
Afghanistan_Jalalabad City_Sub-Office	6	89
Afghanistan_Kabul_Main-Office	101	2,437
Afghanistan_Kandahar City_Sub-Office	6	65
Afghanistan_Mazar City_Sub-office	5	42
Albania_Tirana_Main-Office	9	85
Algeria_Algiers_Main-Office	11	188
Angola_Luanda_Main-Office	26	476
Argentina_Buenos Aires_Main-Office	13	130
Armenia_Yerevan_Main-Office	15	115
Azerbaijan_Baku_Main-Office	7	144
Azerbaijan_Baku_Sub-office	3	44
Bangladesh_Cox's Bazar_Sub-Office	53	678
Bangladesh_Dhaka_Main-Office	77	1,222
Belarus_Minsk_Main-Office	21	206
Belarus_Minsk_Warehouse	0	22
Benin_Cotonou_Main-Office	41	750
Benin_PARAKOU_Sub-Office	6	159
Bhutan_Thimphu_Main-Office	6	343
Bolivia_Cochabamba_Sub-Office	4	15
Bolivia_La Paz_Main-Office	38	579
Bosnia & Herzegovina_Bihac_Sub-Office	2	35
Bosnia & Herzegovina_Sarajevo_Main-Office	17	173
Botswana_Gaborone_Main-Office	10	422
Brazil_Boa Vista_Sub-office	7	94
Brazil_Brasilia_Main-Office	41	320
Brazil_Manauas_Sub-office	3	10
Brazil_Salvador_Sub-Office	2	120
Burkina Faso_Dori_Sub-Office	3	31
Burkina Faso_Fada_Sub-Office	2	9
Burkina Faso_Kaya_Sub-Office	2	12
Burkina Faso_Ouagadougou_Main-Office	37	810
Burkina Faso_Ouahigouya_Sub-Office	2	18
Burundi_Bujumbura_Main-Office	32	637
Cambodia_Phnom Penh_Main-Office	20	560
Cameroon_Bamenda_Sub-Office	2	20
Cameroon_Bertoua_Sub-Office	2	80
Cameroon_Buea_Sub-Office	4	24
Cameroon_Douala_Sub-Office	3	20
Cameroon_Maroua_Sub-Office	9	144
Cameroon_Yaounde_Main-Office	40	1,134
Cape Verde_Praia_Main-Office	35	943
Central African Republic_Bangui_Main-Office	30	2,656
Chad_Abeche_Sub-office	0	19

Entity	No. of Workers	Office Space (m2)
Chad_Baga Sola_Sub-Office	3	18
Chad_Gore_Sub-Office	1	16
Chad_N'Djamena_Main-Office	1	16
China_Beijing_Main-Office	17	413
Colombia_Bogota_Main-Office	122	592
Comoros_Moroni_Main-Office	10	240
Congo_Brazzaville_Main-Office	22	1,204
Costa Rica_San Jose_Main-Office	5	128
Cote D'Ivoire_Abidjan_Main-Office	40	935
Cote D'Ivoire_Bouake_Sub-Office	4	744
Cuba_Ciudad de La Habana_Main-Office	9	89
Dem Rep Congo_Beni_Sub-Office	3	303
Dem Rep Congo_Bukavu_Sub-Office	6	124
Dem Rep Congo_Bunia_Sub-Office	7	274
Dem Rep Congo_Goma_Sub-Office	22	459
Dem Rep Congo_Kalemie_Sub-Office	5	434
Dem Rep Congo_Kananga_Sub-Office	13	910
Dem Rep Congo_Kinshasa_Main-Office	55	1,732
Dem Rep Congo_Kinshasa_Sub-Office	6	540
Dem Rep Congo_Lubumbashi_Sub-Office	6	564
Dem Rep Congo_Mbujimayi_Sub-Office	2	145
Dem Rep Congo_Tshikapa_Sub-Office	4	109
Dem Rep Korea_Bangkok_Sub-office	3	61
Dem Rep Korea_Pyongyang_Main-Office	11	490
Djibouti_Djibouti_Main-Office	11	395
Dominican Republic_Santo Domingo_Main-Office	16	163
Ecuador_Quito_Main-Office	21	210
Egypt_Cairo_Main-Office	38	1,090
El Salvador_Antiguo Cuscatlan_Main-Office	22	400
El Salvador_Izalco Sonsonate_Sub-office	1	214
Equatorial Guinea_Malabo_Main-Office	9	480
Eritrea_Asmara_Main-Office	12	262
Eswatini_Mbabane_Main-Office	10	290
Ethiopia_Addis Ababa_Main-Office	72	1,227
Ethiopia_Adigrat_Sub-office	1	20
Ethiopia_Bahir Dar_Sub-Office	4	36
Ethiopia_Gambella_Sub-Office	2	24
Ethiopia_Hawassa_Sub-Office	4	20
Ethiopia_JIJIGA_Sub-Office	2	23
Ethiopia_Mekelle_Sub-Office	17	256
Ethiopia_Semera_Sub-office	5	12
Ethiopia_Shire Endasselasse_Sub-office	3	30
Gabon_Libreville_Main-Office	14	256
Gambia_Banjul_Main-Office	21	256
Georgia_Tbilisi_EU4GE_Sub-Office	11	193
Georgia_Tbilisi_Main-Office	8	72
Georgia_Tbilisi_Warehouse	0	72
Ghana_Accra_Main-Office	78	750

Entity	No. of Workers	Office Space (m2)
Ghana_Tamale_Sub-Office	4	64
Guatemala_Guatemala City_Main-Office	27	543
Guinea_Conakry_Main-Office	30	1,391
Guinea_Kankan_Sub-Office	4	140
Guinea_Labe_Sub-Office	4	86
Guinea_Mamou_Sub-Office	3	28
Guinea_Nzerekore_Sub-Office	4	562
Guinea-Bissau_Bissau_Main-Office	22	408
Haiti_Port-au-Prince_Main-Office	50	765
Honduras_Tegucigalpa_Main-Office	17	385
Humanitarian Office_Geneva	39	525
India_Bhopal_Sub-Office	9	111
India_Bhubaneswar_Sub-Office	9	362
India_Jaipur_Sub-Office	10	185
India_New Delhi_Main-Office	55	259
India_Patna_Sub-Office	7	87
Indonesia_Jakarta_Main-Office	40	622
Indonesia_Jakarta_Warehouse	0	100
Iran_Tehran_Main-Office	22	407
Iraq_Baghdad_Main-Office	18	70
Iraq_Dohuk_Sub-Office	1	30
Iraq_Erbil_Sub-Office	18	269
Jordan_Amman_Main-Office	38	946
Kazakhstan_Almaly Sub-Office	2	28
Kazakhstan_Astana_Main-Office	12	159
Kenya_Nairobi_Main-Office	35	843
Kosovo_Pristina_Main-Office	8	93
Kosovo_Zvecan_Sub-Office	1	22
Kyrgyzstan_Bishkek_Main-Office	17	231
Lao_Vientiane_Main-Office	29	328
Lebanon_Beirut_Main-Office	21	330
Lesotho_Maseru_Main-Office	13	228
Liberia_Monrovia_Main-Office	32	969
Libya_Benghazi_Sub-Office	1	30
Libya_Tripoli_Main-Office	5	150
Libya_Tunis_Sub-Office	10	298
Madagascar_Antananarivo_Main-Office	48	705
Madagascar_Toliara_Sub-Office	14	800
Malawi_Lilongwe_Main-Office	64	841
Malaysia_Putrajaya_Main-Office	6	120
Maldives_Male_Main-Office	6	127
Mali_Bamako_Main-Office	61	673
Mali_Gao_Sub-Office	4	17
Mali_Mopti_Sub-Office	6	70
Mali_Tombouctou_Sub-Office	3	25
Mauritania_Nouakchott_Main-Office	22	400
Mexico_Mexico, D.F._Main-Office	33	932
Moldova Republic_Chisinau_Main-Office	14	188

Entity	No. of Workers	Office Space (m2)
Moldova Republic_Chisinau106_Sub-Office	4	8
Moldova Republic_Chisinau29_Sub-Office	19	97
Moldova Republic_Chisinau63_Sub-Office	13	200
Mongolia_Ulaanbaatar_Main-Office	22	336
Morocco_Rabat_Main-Office	22	315
Mozambique_Beira_Sub-Office	3	30
Mozambique_Maputo_Main-Office	62	918
Mozambique_Nampula_Sub-Office	11	135
Mozambique_Pemba_Sub-Office	15	268
Myanmar_Bhamo_Sub-office	1	46
Myanmar_Hpa-An_Sub-Office	4	37
Myanmar_Lashio_Sub-Office	3	33
Myanmar_Maungdaw_Sub-Office	3	48
Myanmar_Myitkyina_Sub-Office	5	NAN
Myanmar_Naypyitaw_Sub-Office	14	158
Myanmar_Sittwe_Sub-Office	10	291
Myanmar-Taunggyi_Sub-Office	4	40
Myanmar_Yangon_Main-Office	35	491
Namibia_Windhoek_Main-Office	15	318
Nepal_Bajura_Sub-office	1	22
Nepal_Biratnagar_Sub-Office	2	130
Nepal_Butwal_Sub-Office	10	271
Nepal_Janakpur_Sub-Office	14	340
Nepal_Kailali_Sub-Office	10	243
Nepal_Kathmandu_Main-Office	47	640
Nicaragua_Managua_Main-Office	18	209
Niger_Diffa_Sub-Office	3	23
Niger_Niamey_Main-Office	40	301
Niger_Tahoua_Sub-Office	5	16
Niger_Zinder_Sub-Office	4	156
Nigeria_Abuja_Main-Office	54	388
Nigeria_Calabar_Sub-Office	12	28
Nigeria_Ikoyi Lagos_Sub-Office	13	139
Nigeria_Kaduna_Sub-Office	16	252
North Macedonia_Skopje_Main-Office	13	71
Office in Brussels_Brussels_Main-office	8	271
Office in Geneva_Geneva_Main-office	8	615
Office in London_London_Main-office	2	18
Office in Seoul_Seoul_Main-office	3	34
Office in Tokyo_Tokyo_Main-office	2	82
Office in Washington_Washington DC_Main-office	2	24
Oman_Muscat_Main-Office	10	329
Pakistan_Islamabad_Main-Office	55	841
Pakistan_Karachi_Sub-Office	6	254
Pakistan_Lahore_Sub-Office	3	102
Pakistan_Peshawar_Sub-Office	3	54
Pakistan_Quetta_Sub-Office	4	14
Palestine_Gaza_Sub-Office	8	149

Entity	No. of Workers	Office Space (m2)
Palestine_Jerusalem_Main-Office	20	466
Palestine_Ramallah_Sub-Office	1	29
Panama_Panama City_Main-Office	24	224
Papua New Guinea_Port Moresby_Main-Office	24	188
Paraguay_Asuncion_Main-Office	13	278
Peru_Lima_Main-Office	20	1,473
Philippines_Cotabato City_Sub-Office	8	259
Philippines_Mandaluyong City_Main-Office	32	553
Republic of Yemen_Aden_Sub-Office	11	420
Republic of Yemen_Hodeidah_Sub-Office	3	33
Republic of Yemen_Ibb_Sub-Office	3	8
Republic of Yemen_Saa'da_Sub-Office	2	14
Republic of Yemen_Sana'a_Main-Office	66	1,520
RO-APRO_Bangkok_Main-Office	51	974
RO-ASRO_Amman_Sub-Office	8	210
RO-ASRO_Cairo_Main-Office	43	1,300
RO-ASRO_Dubai_Sub-Office	1	27
RO-EECARO_Almaty_Sub-Office	5	97
RO-EECARO_Istanbul_Main-Office	45	1,000
RO-EECARO_Warszawa_Sub-office	0	10
RO-ESARO_Johannesburg_Main-Office	74	1,767
RO-LACRO_Panama_Main-Office	49	1,208
RO-WCARO_Dakar_Main-Office	57	741
Rwanda_Kigali_Main-Office	31	762
Sao Tome & Principe_Sao Tome_Main-Office	7	165
SCMU_Copenhagen_Main-office	80	1,235
Senegal_Dakar_Main-Office	36	453
Serbia_Belgrade_Main-Office	11	107
Sierra Leone_Freetown_Main-Office	45	600
Somalia_Baidoa_Sub-Office	3	20
Somalia_Garowe_Sub-Office	10	49
Somalia_Hargeisa_Sub-Office	14	18
Somalia_Mogadishu_Main-Office	70	792
Somalia_Nairobi_Sub-Office	23	276
South Africa_Bisho_Sub-Office	2	79
South Africa_Pretoria_Main-Office	13	460
South Sudan_Bentiu_Sub-Office	3	100
South Sudan_Juba_Main-Office	68	643
South Sudan_Malakal_Sub-Office	2	50
South Sudan_Wau_Sub-Office	3	42
Sri Lanka_Colombo_Main-Office	28	286
Sri Lanka_Kilinochchi_Sub-office	4	29
SRO-Jamaica_Belize City_Sub-Office	7	82
SRO-Jamaica_Christ Church_Sub-Office	13	55
SRO-Jamaica_Georgetown_Sub-Office	11	36
SRO-Jamaica_Kingston_Main-Office	17	41
SRO-Jamaica_Paramaribo_Sub-Office	3	42
SRO-Jamaica_Port-of-Spain_Sub-Office	9	44

Entity	No. of Workers	Office Space (m2)
SRO-Pacific_Apia_Sub-Office	4	33
SRO-Pacific_Honiara_Sub-Office	2	41
SRO-Pacific_Majuro_Sub-Office	2	40
SRO-Pacific_Nukualofa_Sub-Office	3	80
SRO-Pacific_Pohnpei_Sub-Office	4	147
SRO-Pacific_Port Vila_Sub-Office	3	322
SRO-Pacific_Suva_Main-Office	52	818
SRO-Pacific_Tarawa_Sub-Office	3	19
Sudan_El Fasher_Sub-Office	4	147
Sudan_El-Damazine_Sub-Office	4	47
Sudan_Geneina_Sub-Office	6	450
Sudan_Kassala_Sub-Office	3	32
Sudan_Khadogli_Sub-Office	0	24
Sudan_Khartoum_Main-Office	71	500
Sudan_Nyala_Sub-Office	6	600
Sudan_Port Sudan_Sub-office	13	420
Sudan_Zalingei_Sub-Office	2	16
Syrian Arab Republic_Aleppo_Sub-Office	5	120
Syrian Arab Republic_Damascus_Main-Office	63	210
Syrian Arab Republic_Damascus_Sub-Office	25	360
Syrian Arab Republic_Deir Ezzor_Sub-Office	4	43
Syrian Arab Republic_Homs_Sub-Office	4	123
Syrian Arab Republic_Qamishli_Sub-Office	5	133
Tajikistan_Dushanbe_Main-Office	14	285
Tanzania_Dar-es-Salaam_Main-Office	6	180
Tanzania_Dodoma_Sub-office	1	78
Tanzania_Zanzibar_Sub-Office	6	218
Thailand_Bangkok_Main-Office	12	165
Timor Leste_Dili_Main-Office	31	338
Togo_Lome_Main-Office	29	291
Tunisia_Tunis_Main-Office	17	250
Türkiye_Ankara_Main-Office	38	600
Türkiye_Gaziantep_Sub-Office	14	98
Turkmenistan_Ashgabat_Main-Office	12	204
Uganda_Gulu_Sub-Office	6	74
Uganda_Kampala_Main-Office	79	1,500
Uganda_Moroto_Sub-Office	5	180
Ukraine_Dnipro_Sub-Office	4	104
Ukraine_Kyiv_Main-Office	91	594
Ukraine_Lviv_Sub-Office	2	71
Ukraine_Odesa_Sub-Office	3	61
Ukraine_Poltava_Sub-Office	3	53
Ukraine_Uzhhorod_Sub-Office	6	558
Ukraine_Vinnytsia_Sub-Office	1	50
UNFPA HQ_New York_Main-Office	644	12,146
Uruguay_Montevideo_Main-Office	11	90
Uzbekistan_Tashkent_Main-Office	26	412
Venezuela_Caracas_Main-Office	35	437

Entity	No. of Workers	Office Space (m2)
Venezuela_Caracas_Sub-office	20	220
Venezuela_Maracaibo_Sub-office	6	93
Venezuela_Puerto Ordaz_Sub-Office	5	53
Venezuela_San Cristobal_Sub-office	5	26
Viet Nam_Hanoi_Main-Office	35	524
Zambia_Lusaka_Main-Office	36	322
Zambia_Mansa_Sub-Office	3	57
Zambia_Mazabuka_Sub-office	3	45
Zambia_Petauke_Sub-office	2	30
Zimbabwe_Harare_Main-Office	33	1,086
Total: 295 offices	5,668	106,183